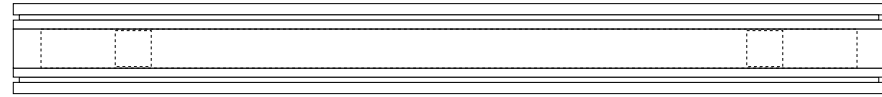
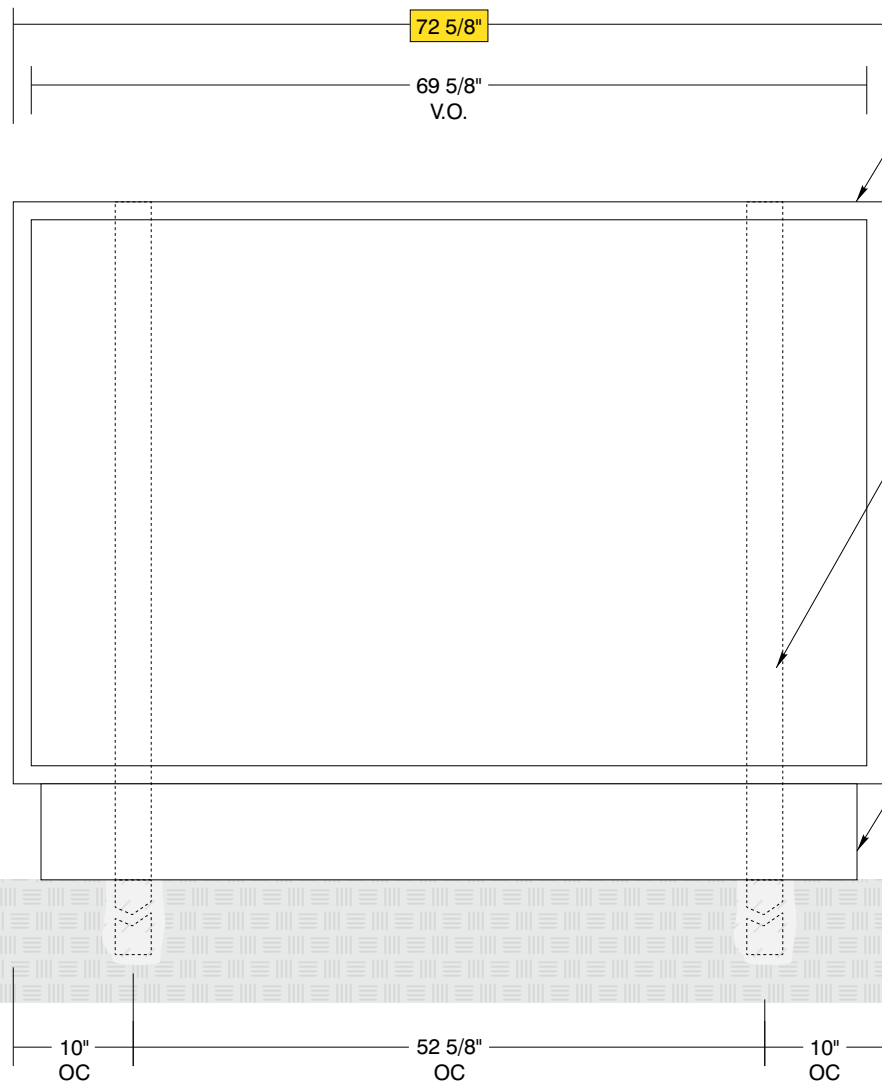


TOP VIEW

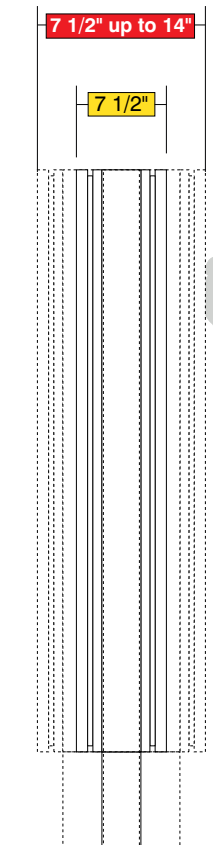


SIDE A

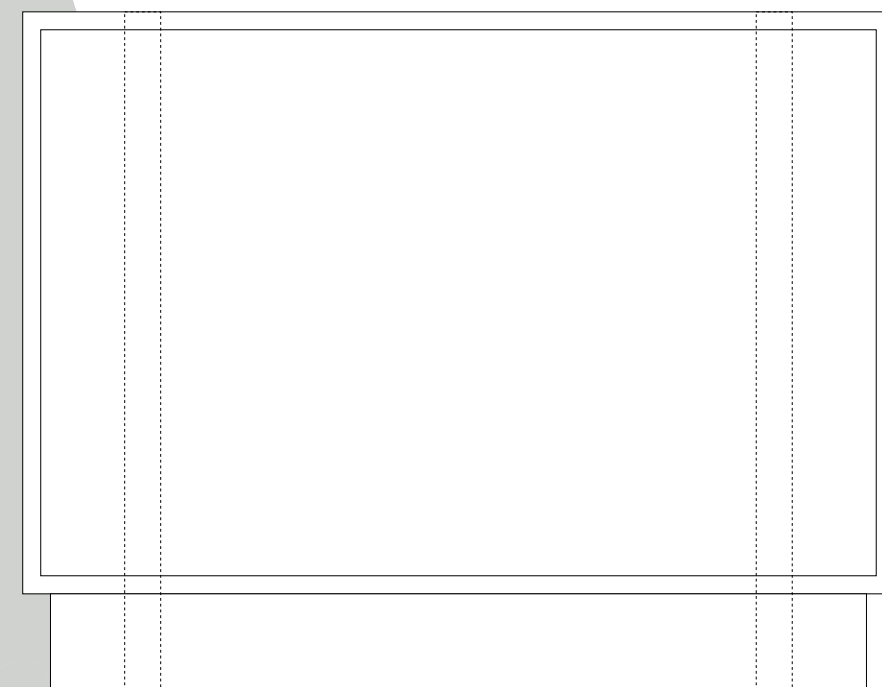


SIDE VIEW

Cabinet Depth Sizes



SIDE B



- **Sign System: (I-Flex Standard Face)**
 - (2) .080" Aluminum Panels: (H) 48" x (L) 72"
- **Paint:**
 - Standard White - Frame, Panel, Baseskirt
- **Double Internal Post Mount**
 - (2) Post Size: 3" x 3" x (L) 86 1/2"
- **Removable Base Skirt**
 - .080" Aluminum (H) 8" x (L) 68" x (D) 3 1/4"

Date	DWG# I-Flex_SF_Pylon	Scale: 3/4"=1'	Customer	Mounting SF/DF	Double Internal Post Mount Double Face		Quote #	
X.X.XX			Location	Illuminated	NO	UL	Sales Rep.	
Quantity			System	Voltage	N/A	Amp N/A	Illustrator:	
1			i-Flex Standard Face 48x72 Pylon Sign System	ADA	No		Reviewed By:	
Page				*Due to the ADA/ ANSI's wide interpretation and other factors that may exist, we cannot affirm compliance in all situations and is hereby removed from responsibility regarding these issues.				
1 of 1								



• 6400 Howard Drive, Fairview PA 16415 • Toll Free 800.458.0591 •
 • PA 814.833.7000 • Fax 814.838.0011 •
 www.howardindustries.com

All concepts and designs represented by this drawing are the property of Howard Industries and may not be reproduced or used in any manner without written consent. ©Copyright 2020 Howard Industries.