

**• Sign System: HED-300 SF Peak Top**

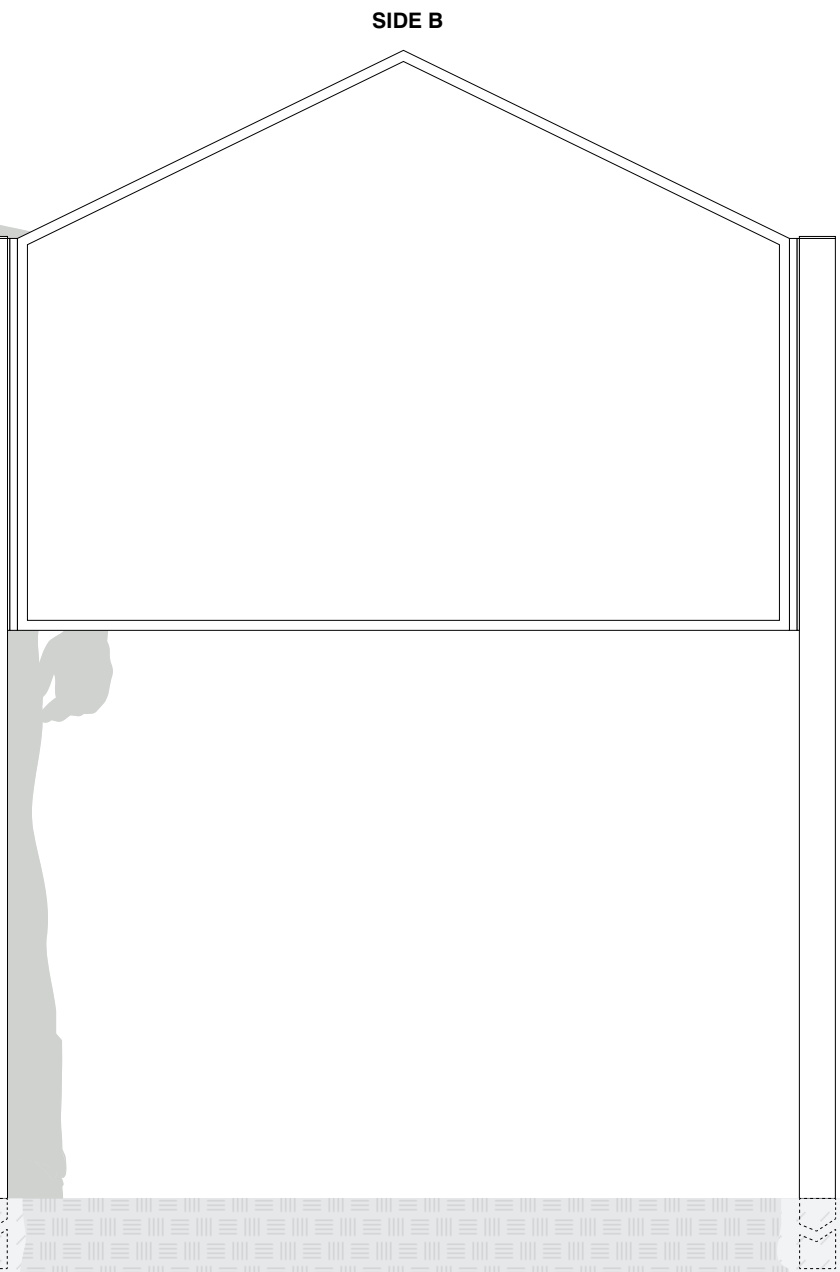
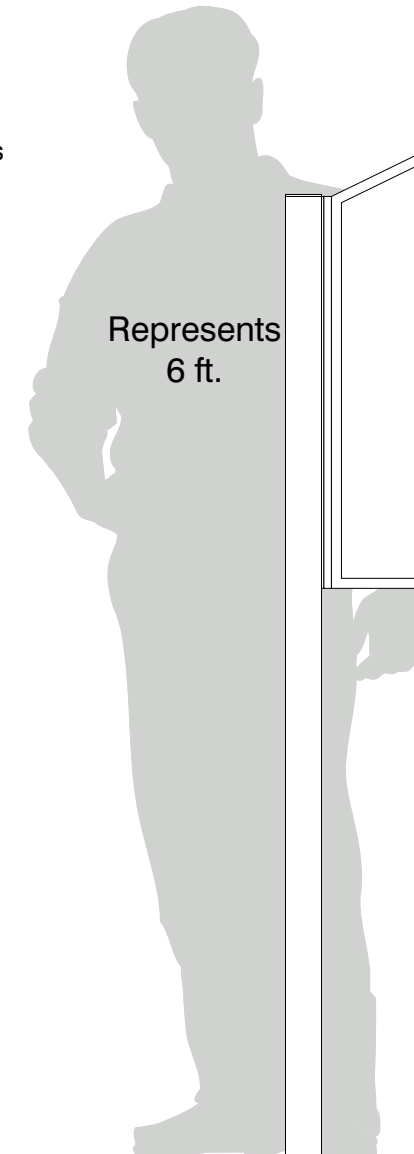
- Miter A: 26.1°
- Miter B & C: 32°
- (2) .050" Aluminum Panel: (H) 36" x (L) 48"

**• Paint:**

- Standard White - Frame, Panels, Posts, Caps

**• Double Post Mount**

- (2) Posts Size: 2 1/4" x 3" x (L) 90" with Caps



Date	DWG# HED-300_SF_PeakTop	Scale: 1"=1'	Customer	Mounting SF/DF	Double Post Mount Double Face	Quote #
XX.XX.XX				NO	UL	Sales Rep.
Quantity			Location	Voltage	N/A Amp N/A	Illustrator:
1				ADA	No Rev. 0	Reviewed By:
Page			System	*Due to the ADA/ANSI's wide interpretation and other factors that may exist, we cannot affirm compliance in all situations and is hereby removed from responsibility regarding these issues.		
1 of 1			HED-300 (36"x 48") Standard Face Peak Top Sign System			



• 6400 Howard Drive, Fairview PA 16415 • Toll Free 800.458.0591 •  
 • PA 814.833.7000 • Fax 814.838.0011 •  
 www.howardindustries.com

All concepts and designs represented by this drawing are the property of Howard Industries and may not be reproduced or used in any manner without written consent. ©Copyright 2020 Howard Industries.