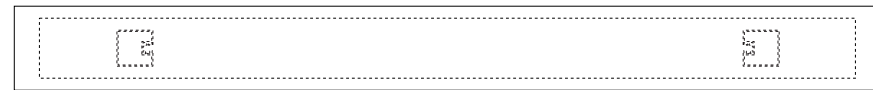
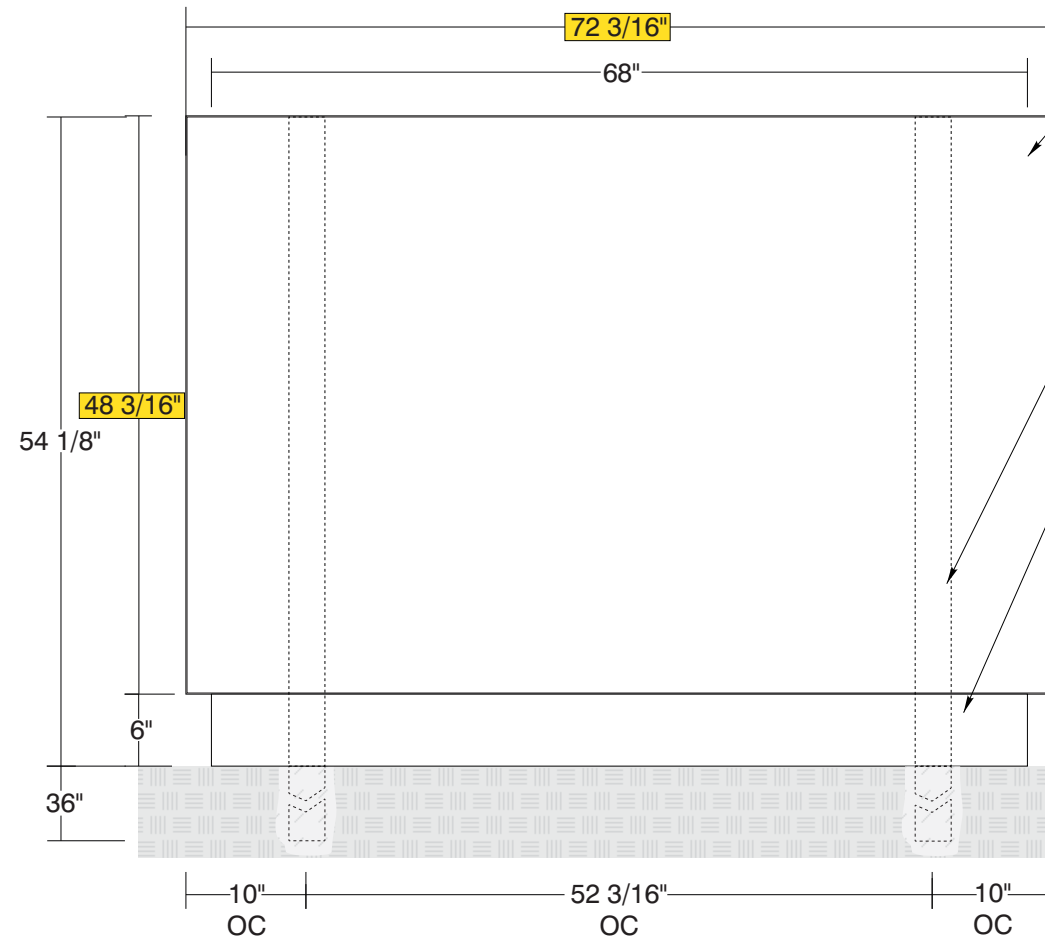


TOP VIEW

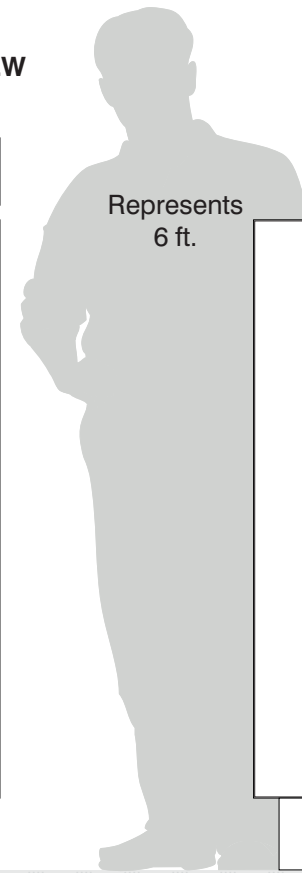
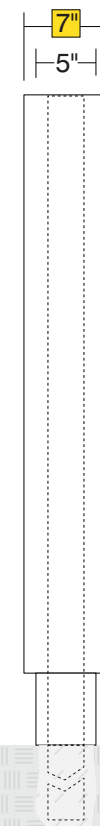


SIDE A

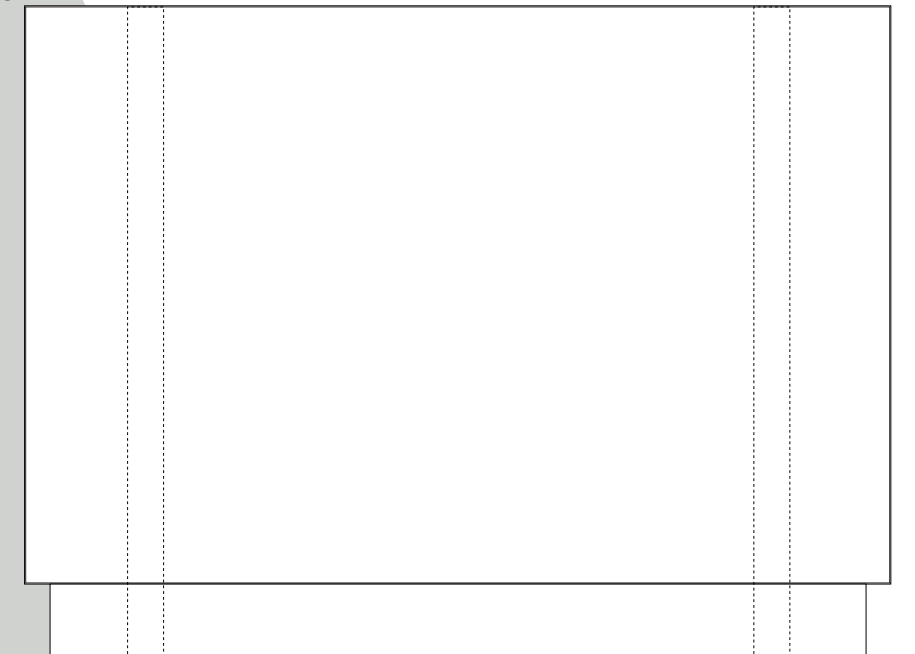


- **Sign System: HED I-70 Flush Face**
 - (2) .080" Aluminum Panel: (H) 48" x (L) 72"
- **Paint:**
 - Standard White - Frame, Panels, Posts
- **Double Internal Removable Post Mount**
 - (2) Posts Size: 3" x 3" x (L) 90 1/8"
- **Removable Base Skirt**
 - .080" Aluminum: (H) 6" x (L) 68" x (D) 5"

SIDE VIEW



SIDE B



Date	DWG# HED I-70_FF_INT	Scale:	3/4"=1'	Customer	XXXXXXXXXX	Mounting	Double Post Mount			Quote #	XXXXXXXXXX
X.X.23						SF/DF	Double Face			Sales Rep.	XXXXXXXXXX
Quantity				Location	XXXXXXXXXXXX	Illuminated	NO	UL		Illustrator:	XXXXXXXXXX
1						Voltage	N/A	Amp	N/A	Reviewed By:	XXX-XX.XX.XX
Page				System	HED I-70 FLUSH FACE INTERIOR POST	ADA	No				
1 of 1						*Due to the ADA/ANSI's wide interpretation and other factors that may exist, we cannot affirm compliance in all situations and is hereby removed from responsibility regarding these issues.					



• 6400 Howard Drive, Fairview PA 16415 • Toll Free 800.458.0591 •
 • PA 814.833.7000 • Fax 814.838.0011 •
 www.howardindustries.com

All concepts and designs represented by this drawing are the property of Howard Industries and may not be reproduced or used in any manner without written consent. ©Copyright 2020 Howard Industries.