

• Sign System: HED-200 Projection Mount

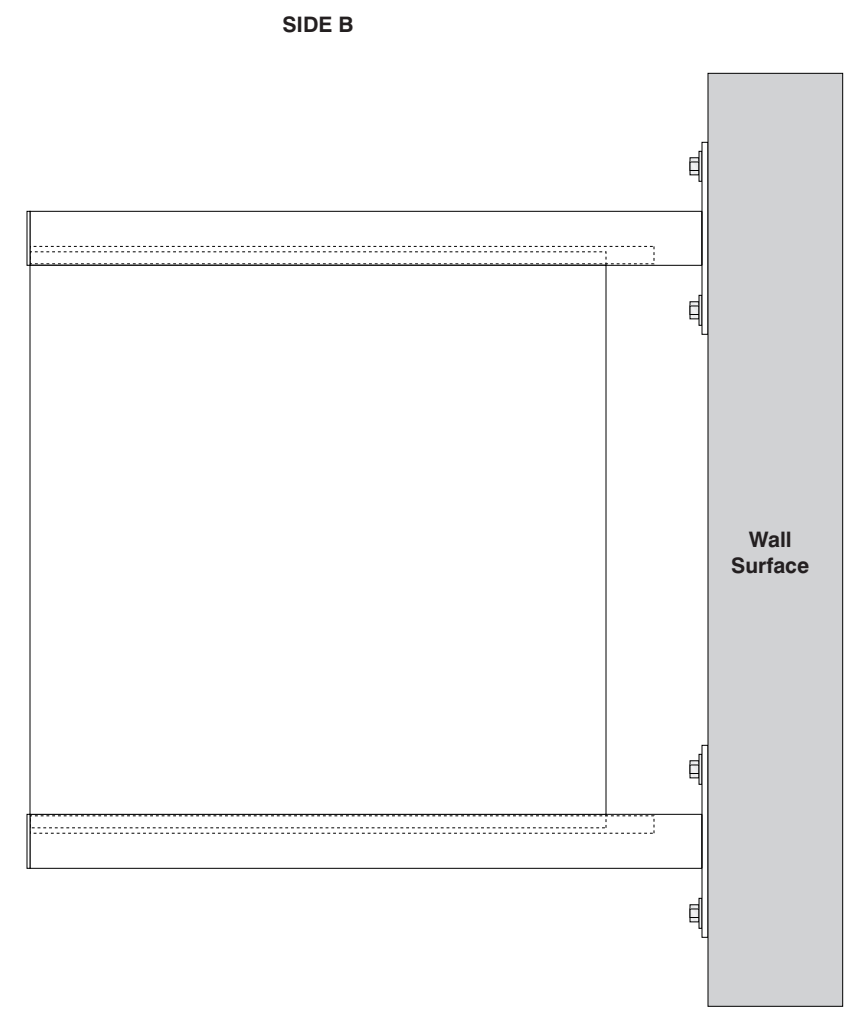
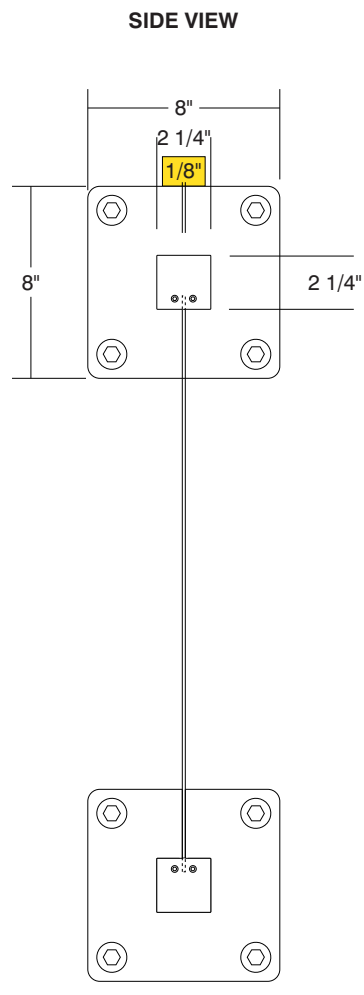
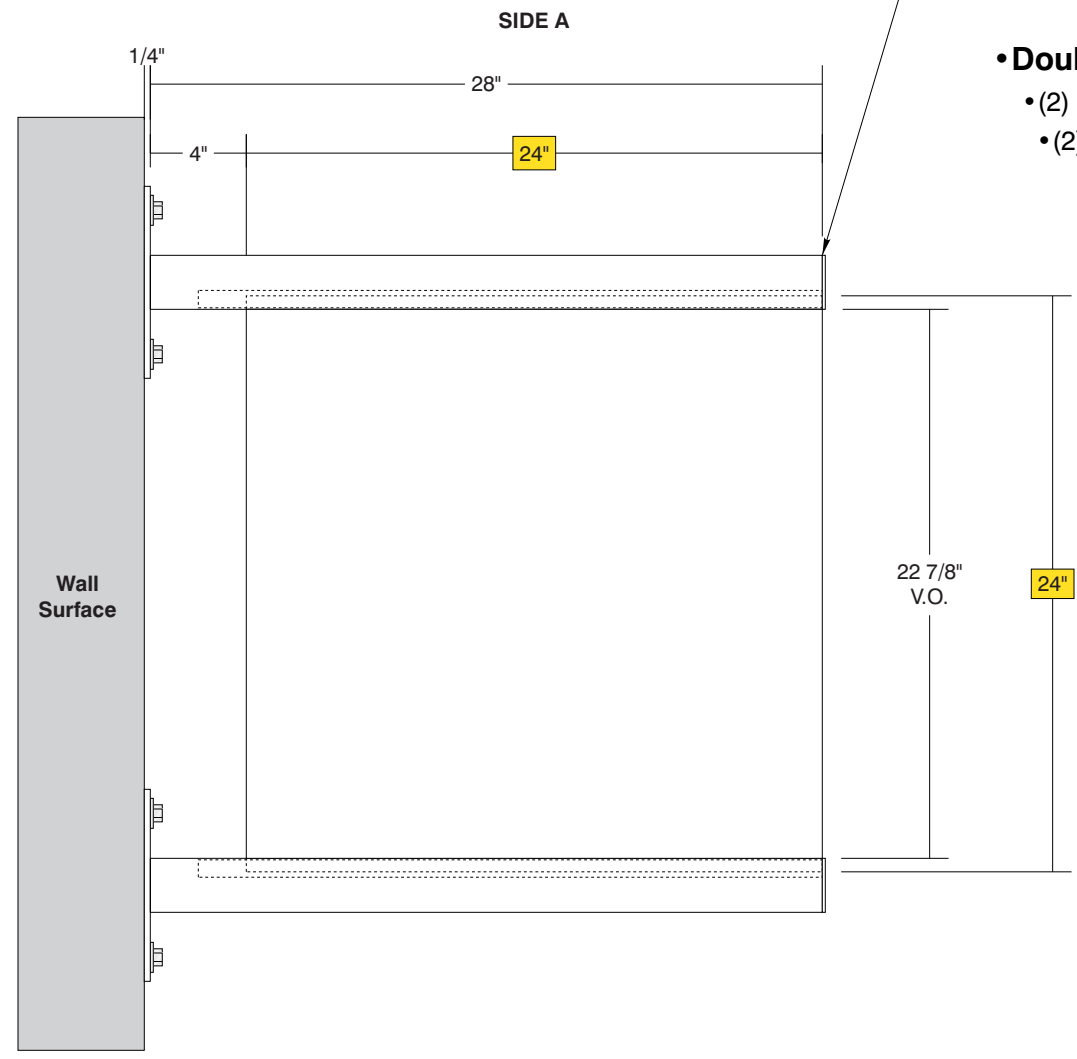
- (1) .125 Aluminum Panel: (H) 24" x (L) 24"
- (2) U-Channel Lengths @ 26"

• Paint:

- Standard White - Panel, U-Channels, Posts, Caps

• Double Post Mount w/ Base Plates

- (2) Post Size: 2 1/4" x 2 1/4" x (L) 28" with Caps
- (2) 1/4" Aluminum Base Plates: 8" x 8"



Date	DWG# HED-200_ProjectionMount	Scale:	1"=1'	Customer		Quote #	
XX.XX.XX							
Quantity				Location		Sales Rep.	
1							
Page				System	HED-200 (24" x 24") Projection Mount Sign System	Illustrator:	
1 of 1						Reviewed By:	
				Mounting SF/DF	Double Post Projection Mount Double Face		
				Illuminated	NO	UL	
				Voltage	N/A	Amp	N/A
				ADA	No	Rev.	0
				*Due to the ADA/ ANSI's wide interpretation and other factors that may exist, we cannot affirm compliance in all situations and is hereby removed from responsibility regarding these issues.			



• 6400 Howard Drive, Fairview PA 16415 • Toll Free 800.458.0591 •
 • PA 814.833.7000 • Fax 814.838.0011 •
 www.howardindustries.com

All concepts and designs represented by this drawing are the property of Howard Industries and may not be reproduced or used in any manner without written consent. ©Copyright 2020 Howard Industries.